



SKI WORLD CUP
FEBRUARY 24-28.2021

TEAM INFO BOOKLET

**C-19 Prevention Measures and
Recommendations Protocol**

VAL DI FASSA AUDI FIS SKI WORLD CUP
PASSO SAN PELLEGRINO

WOMEN DOWNHILL AND SUPER-G

24th-28th FEBRUARY 2021



“Val di Fassa Audi FIS Ski World Cup”
Passo San Pellegrino (Moena – Italy)
C-19 Prevention Measures and Recommendations Protocol

INDEX OF CONTENTS

INTRODUCTION TO THE COVID-19 PREVENTION PROTOCOL	p. 3
GENERAL PREVENTIVE MEASURES	p. 4
1. Distance and Protection	
2. Sanification	
3. Rules of Conduct	
4. Avoid gatherings	p. 5
SPECIFIC PREVENTIVE MEASURES	p. 6
1. Racing in Italy and Travel Restrictions	
2. Journey to Val di Fassa	
VAL DI FASSA SKI WORLD CUP PREVENTION PLAN CONCEPT	p. 7
Bubble System	
EVENT REGISTRATION	p. 8
VAL DI FASSA SKI WORLD CUP TEAM INFORMATION FOR TEST AND TEST PROTOCOL	p. 9
COVID-19 Communication	
Val Di Fassa Ski World Cup COVID-19 Office	
VAL DI FASSA SKI WORLD CUP HEADQUARTER	p. 10
Accreditation	p. 11
Accommodation	
Race Office	p. 12
TC MEETING	p. 13
HOW TO REACH THE VENUE FROM THE HOTELS	p. 14
EVENT AREAS: GENERAL MEASURES	p. 14
EVENT AREAS: SPECIFIC MEASURES	p. 15
Training	
Team Hospitality	
Access to the Cable Car and Course	
Starting Area	p. 16
Finish Area	p. 17
LEAVING VAL DI FASSA	p. 18
GENERAL RECOMMENDATIONS	p. 18



“Val di Fassa Audi FIS Ski World Cup”
Passo San Pellegrino (Moena – Italy)
C-19 Prevention Measures and Recommendations Protocol

INTRODUCTION TO THE COVID-19 PREVENTION PROTOCOL

Due to the COVID-19 pandemic, the AUDI FIS Ski World Cup in Val di Fassa (TN – Italy) scheduled from February 24th to 28th 2021 must be held under increased security measures.

According to the current national and local regulations, as well as to the FIS prevention measures and to the Organizing Committee (LOC) dispositions, we hereby send the protocol of instructions to be taken by the Teams while in Val di Fassa, on occasion of the event taking place at Passo San Pellegrino from February 24th to 28th 2021.

This is part of a wider project of Prevention and Safety against COVID 19 adopted by the LOC, in partnership with the local authorities to protect the workers' health and the entire community as well.

We kindly ask you to forward this protocol to all the team members (athletes, coaches, service people, NSA officials etc.) who have been registered via the FIS platform.

By registering for this event, each team member entirely confirms and accepts the contents of this protocol of measurements for the above mentioned event and agrees to respect it for everyone's health.

This protocol contains general and specific measures of prevention covering behavioural and organizing requirements, both collective and individual.

According to the following suggestions, it is recommended to each Team to independently ensure that specific containment measures for COVID 19 risk are developed.



**“Val di Fassa Audi FIS Ski World Cup”
Passo San Pellegrino (Moena – Italy)
C-19 Prevention Measures and Recommendations Protocol**

GENERAL PREVENTIVE MEASURES

1. Distance and protection

It is mandatory to maintain in every situation and condition interpersonal safety distance of at least 1 meter (social distancing) and to wear certified Individual respiratory Protection Equipment (respiratory IPE) in all indoor areas, except for private living quarters, and in all outdoor places, apart from all the specific situations where it is possible to guarantee a continuous condition of isolation.

For those who are carrying out sports activities this obligation may be waived (see below).

Anyway, it is strongly recommended to use the respiratory IPE inside the private living quarters (e.g. Hotel rooms) too when in presence of not permanently cohabitant people.

Therefore, unless otherwise specified:

It is mandatory to always wear a protection to mouth and nose (face mask) on the entire location of the event, except:

- inside the private living quarters (e.g. Hotel rooms);
- during mealtimes;
- during the practice of sport: pre-race activity (on/off the track) and race;
- exclusively the athletes involved while on the warm up zone and in the starting area (according to social distancing precaution)

2. Sanification

The use of the Individual respiratory Protection Equipment (respiratory IPE) is complimentary to the other measures of control of the infection such as the constant and careful hand hygiene and the disinfection of equipment and materials.

3. Rules of Conduct

From 10.00 P.M. to 5.00 A.M. the only allowed movements are for demonstrated needs (e.g. Health reasons). During the rest of the day, it is strongly recommended to move from your accommodation for purposes relating the event activities only, taking care, wherever possible, to avoid any gatherings. So, please, we kindly recommend to spend your free time in small groups, with your team members only. Reduce your activities to the necessary purchases and the urgent tasks that you can't absolutely postpone.



“Val di Fassa Audi FIS Ski World Cup”
Passo San Pellegrino (Moena – Italy)
C-19 Prevention Measures and Recommendations Protocol

4. Avoid gatherings

It is mandatory for all the public places, cabins ski lift and adjacent access spaces included, to expose at the entrance signboards indicating maximum number of people simultaneously allowed. Everybody must observe this maximum number of people allowed in. We recommend a good and punctual organization to avoid any delay on the fixed time because of any long wait.

To reduce at the minimum the risk of infection, the LOC advise to all the teams to:

- Remain in small groups;
- Avoid other teams contact;
- Avoid LOC staff contact;
- Avoid tourist and fans contact;
- Journalists interview only at distance and with Individual respiratory Protection Equipment (respiratory IPE);
- Properly and periodically wash and sanitize your hands;
- Have a documentation of your current state of health.



“Val di Fassa Audi FIS Ski World Cup”
Passo San Pellegrino (Moena – Italy)
C-19 Prevention Measures and Recommendations Protocol

SPECIFIC PREVENTIVE MEASURES

1. Racing in Italy and Travel Restrictions

In Italy only events and competitions organized by National and International Sports Agencies are currently allowed, without any audience (so-called “closed events”). The athlete workout sessions are allowed without audience too, still according to the Federation protocols and in respect of the social distancing of at least 2 meters.

In case of athletes, coaches, judges and race stewards or companions arriving from Countries for which entering Italy is forbidden or for which the quarantine is requested, (see the entire list on the “Attachment n. 20” of the DPCM 14.01.2021 at the following link <http://www.salute.gov.it/portale/nuovocoronavirus/dettaglioContenutiNuovoCoronavirus.jsp?lingua=english&id=5412&area=nuovoCoronavirus&menu=vuoto>), before entering Italy they have to perform an molecular COVID-19 test, to certify their health status, not older than 72 hours before the arrival on the Italian territory. The result of the test has to be indicated on the declaration provided (see below). For everyone else, who must yet upload on his own FIS passport a negative molecular or antigen test before getting to Val di Fassa, a sampling point will be available the *COVID-19 Test and Health Centre* located at the Navalge centre in Moena during the whole duration of the event, from 24th to 28th February 2021, between 9.00 a.m. and 12.00 p.m. and from 3.00 to 6.00 p.m.. The service will be carried out by the Dolomiten Trauma Clinic (tel. +39 335 445917) and the COVID-19 responsible for the LOC will be Dr. Orazio Braghenti.

By the *COVID-19 Test and Health Centre* it will be possible to undertake antigen and PCR tests at a reduced price (€ 45 antigen test; € 130 PCR test), upon reservation at the +39 0462 888014.

The mountain lifts and the ski resorts are currently closed for everybody but athletes, in order to allow them to train for national and international competitions and for the event themselves.

The LOC, therefore, must limit the number of accredited people. People included in the FIS quota only will therefore be entitled to enter the team and sport areas. Those not included in the actual FIS quota won't be allowed to enter those areas and won't be allowed to stay at the hotels dedicated to the teams only!

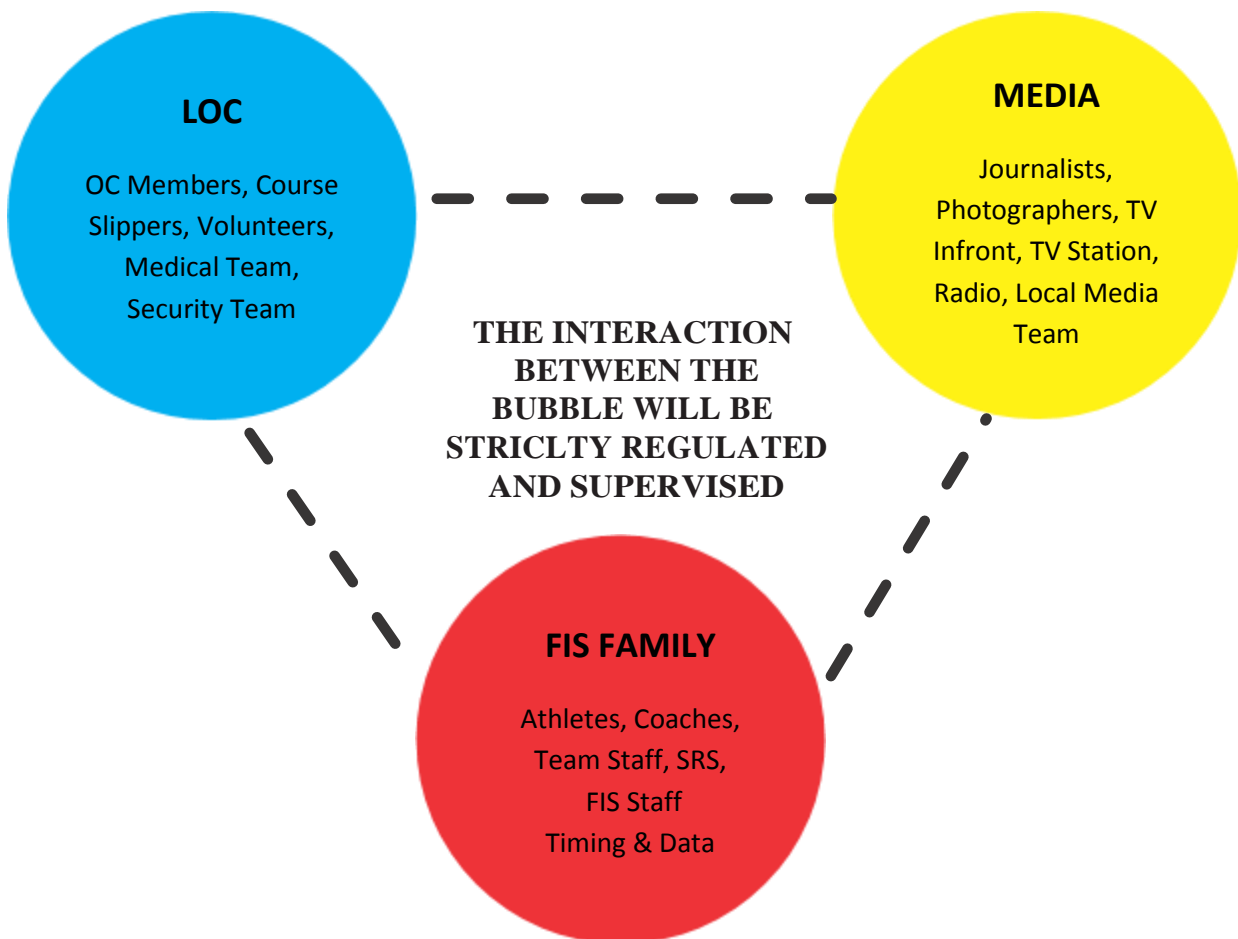
2. Journey to Val di Fassa

- In case of COVID-19 symptoms, do not travel to the venue.
- Avoid any stop between the departure point and the event location.
- Avoid contact with other people – especially if not part of your team.

VAL DI FASSA SKI WORLD CUP PREVENTION PLAN CONCEPT

According to the FIS Prevention and Mitigation Guidelines, one of the core elements to guarantee a good level of safety shall be creating different “bubbles” (“FIS Snowflakes”) gathering different groups. People being regularly tested and being disciplined according to rules and regulations should limit any interaction with persons not being subject to strict protocols.

Bubbles System



For each group specific prevention measures are envisaged relating to the various operational activities. There are also operational locations and differentiated flows that limit the interaction between the different bubbles.

The following information will provide the necessary information for the individual groups (RED BUBBLE) in order to describe all the specific measures and useful information.



**“Val di Fassa Audi FIS Ski World Cup”
Passo San Pellegrino (Moena – Italy)
C-19 Prevention Measures and Recommendations Protocol**

EVENT REGISTRATION

Entries will only be accepted from National Ski Associations according to FIS quotas and to the rules for the Alpine Ski World Cup. Entries will be accepted via the FIS online registration system only within the mentioned deadlines. The World Cup rules are available on the FIS website.

Final entry deadline:

Wednesday February 17th 2021

For any event related questions please contact:

Accreditation office:

Marta Covi entries@fassa.com



“Val di Fassa Audi FIS Ski World Cup”
Passo San Pellegrino (Moena – Italy)
C-19 Prevention Measures and Recommendations Protocol

VAL DI FASSA SKI WORLD CUP – TEAM INFORMATION FOR TEST AND TEST PROTOCOL

Each team member, officially entered by their respective NSA, via the FIS PASSPORT online system, must present a negative PCR test not older than 72 hours. Test result must be uploaded at least 24 hours before the arrival on the FIS passport platform (<https://fispasport.fis-ski.com/fis/>)

However, PCR tests submitted to be entered in CORTINA will be retained valid, for those who started in the competitions of February 20th and 21st, for VAL DI FASSA too.

Covid-19 Communication

- In case of symptoms, immediately inform the COVID-19 responsible for the LOC, Dr. Orazio Braghenti (Mob. +39 338 8642235).
- The LOC will activate the COVID-19 rescue chain
- All communication regarding COVID-19 must be coordinated with the FIS and the LOC.

Val di Fassa Ski World Cup COVID19 Office

To ensure maximum support to the people involved in the event and to provide all the necessary information and updates regarding the Covid19 situation, The C19 Support office will be active from February 20th, 2021

Contact: Dolomiten Trauma Clinic +39 335 445917

COVID-19 Test and Health Centre

c/o Val di Fassa Ski World Cup Headquarter
Piaz de Navalge, 4
38035 Moena –TN-



“Val di Fassa Audi FIS Ski World Cup” Passo San Pellegrino (Moena – Italy)

C-19 Prevention Measures and Recommendations Protocol

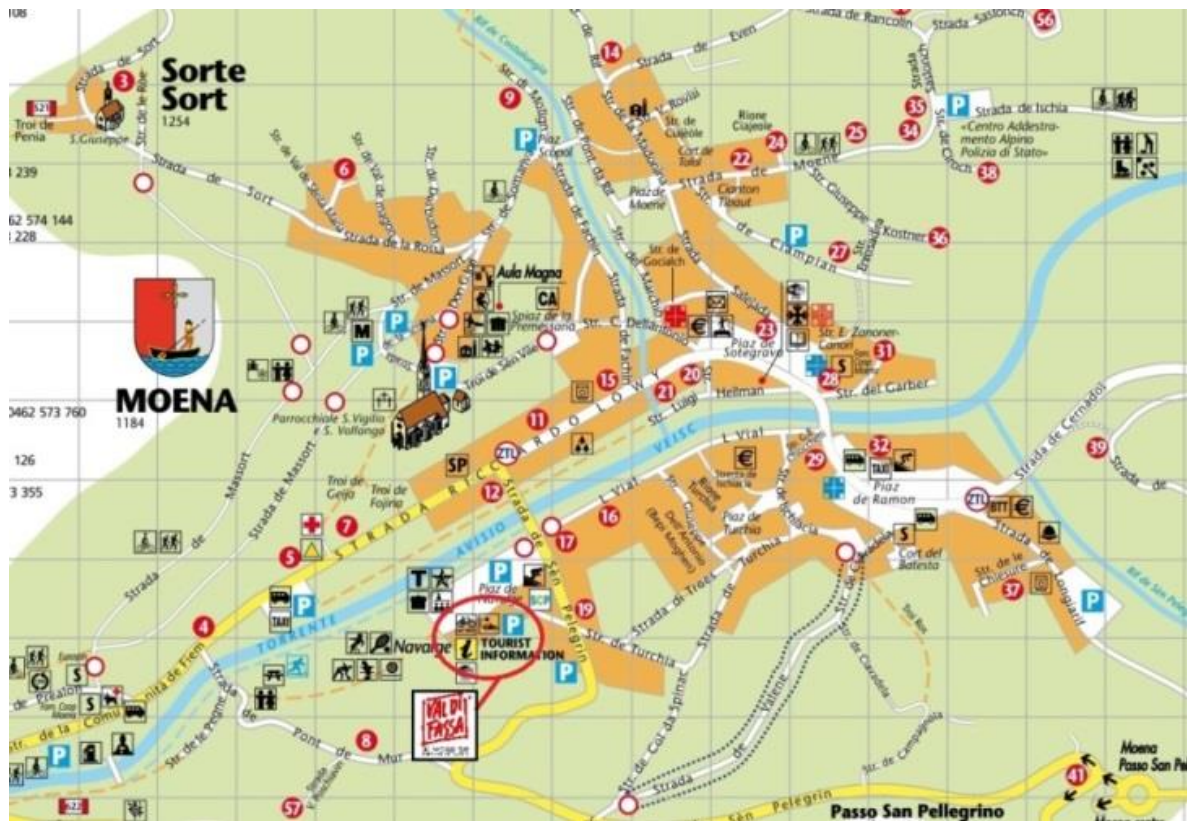
VAL DI FASSA SKI WORLD CUP HEADQUARTER

The event Headquarter will be located at the Navalge Centre in Moena,

Val di Fassa Ski World Cup
Tourist Board Val di Fassa
Piaz de Navalge, 4
38035 Moena –TN-

At the headquarter you will find

- Accreditation Office
- Accommodation Office
- Race Office





**“Val di Fassa Audi FIS Ski World Cup”
Passo San Pellegrino (Moena – Italy)
C-19 Prevention Measures and Recommendations Protocol**

ACCREDITATION

Contact: Ms Marta Covi
Email: entries@fassa.com

Office Opening time:

From Tuesday, 23rd February 2021 to Sunday, 28th February 2021
From 8.00 a.m. to 6.00 p.m.

Due to the current situation, the LOC must limit the number of accredited persons.

Only the team captain or a team representative can collect all team's accreditations. Please note that specific protection measurements have been adopted on the event site to protect the LOC employees and all the people involved in the event. These measures must also be observed by the teams when approaching the staff. These provisions are contained in the COVID 19 protocol adopted by the LOC and available on the website.

ACCOMMODATION

Contact: Mr. Adriano Ricci
Email: accommodation@fassa.com

Opening Times From Tuesday, 23rd February 2021 to Sunday, 28th February 2021
From 8.00 a.m. to 10 a.m. and from 2.00 p.m. to 6.00 p.m.

According to the FIS World Cup rules, the LOC will offer accommodation from the official arrival day to the official departure day. The teams must announce the room reservation via the FIS online registration system.

Please note that accommodation at the FIS rate is available for the official dates of the programme only

Arrival: Tuesday, 23rd February 2021

Departure: Monday, 1st March 2021

Earlier arrival and later departures are subject to availability and are not granted at the FIS rate. Additional Officials have to be paid directly in the hotel, at the maximum price of CHF 120,-. Any extras must be paid by the teams or athletes themselves.



“Val di Fassa Audi FIS Ski World Cup”
Passo San Pellegrino (Moena – Italy)
C-19 Prevention Measures and Recommendations Protocol

- The LOC has reserved exclusive team accommodation (no audience/tourists).
- The hotels are currently reserved for athletes and officials only, according to the FIS quota, for the period between the official arrival (23.02.2021) and the official departure (01.03.2021).
- In case of earlier arrival or later departure of the team members, we kindly ask to immediately inform the LOC at the following e-mail address: accommodation@fassa.com
- Each team member is obliged to stay in the accommodation allocated by the LOC for the total duration of the event.
- Wear a mouth and nose protection in all public areas.
- In the buffet area a mouth and nose protection is compulsory. This can be taken off once at the table.
- Further hygiene measures according to the hotels policy.
- Check-in of all team members by the team captain.
- Maintain social distancing in all areas.

RACE OFFICE

Contact: Ms Marta Covi
Email: entries@fassa.com

Race Office Opening time:

From Tuesday, 23rd February 2021 to Sunday, 28th February 2021
From 8.00 a.m. to 6.00 p.m.

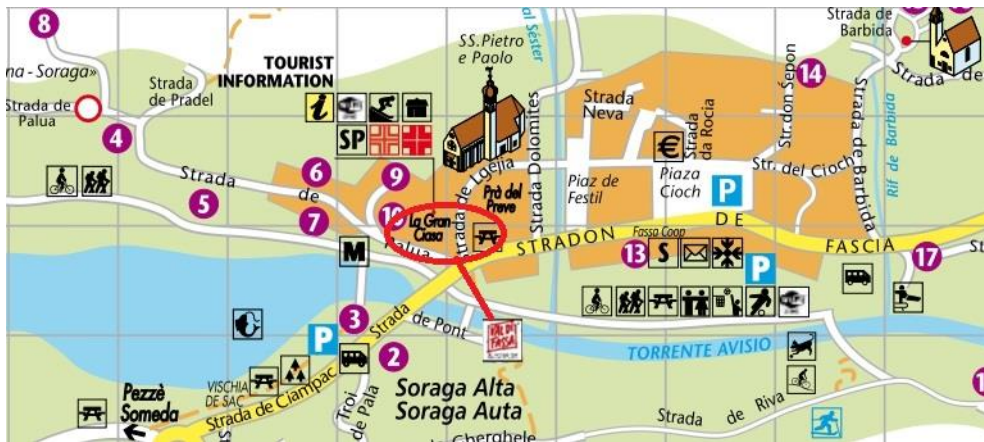
TC MEETING

The first Team Captains Meetings is scheduled on **February 23rd at 5.00 p.m.** , by

**the Gran Ciasa community building
Piaz Bepo Roch, 1
38030 Soraga di Fassa**

Access is guaranteed to a limited number of people, that is:

- The jury
- The event manager
- The Covid referent and event doctor
- LOC secretary
- Swiss Timing
- 1 representative per Team
- 1 representative of SRS
- 1 representative of the HBC



On occasion of the first Team Captains Meeting, the team representative will be given an assumption of responsibility file, to be signed by the Team Captain, in order to make use of the Training Course (see paragraph “Training”).

On occasion of every Team Captains Meeting, the team representative will be given the ski passes for all the athletes and officials who need to reach the start area / the training area.



“Val di Fassa Audi FIS Ski World Cup”
Passo San Pellegrino (Moena – Italy)
C-19 Prevention Measures and Recommendations Protocol

HOW TO REACH THE VENUE FROM THE HOTELS

The accreditation and race office staff will provide each team with the map with updated directions to reach the interest points for the teams (hotel, race venue, team captains meeting).

Please remember:

- Athletes and teams should move with the teams’ own vehicles.
- Use the routes indicated on the specific map that will be available on the website <http://www.valdifassaskiworldcup.it/> and follow the directions to the parking lot and to the lift, located in loc. Passo San Pellegrino.
- Avoid stops between the hotel and the venue.
- Use only the team parking and hospitality area assigned and designated for your team.

EVENT AREA: GENERAL MEASURES

Keep the social distancing

- Stay in assigned and marked team zones
- The team area is delimited and accessible to the accredited persons only
- Avoid any direct contact with other teams.
- Avoid any direct contact with the staff/ press.
- Mouth and nose protections must be worn while at the venue
Exceptions:
 - While doing sport
 - Meals
 - In the start and warm-up area, athletes do not need mouth and nose protection, but mouth and nose protection is mandatory for all coaches / officials.
- If a team member feels sick or exhibits COVID-19 symptoms, contact the COVID-19 LOC responsible for the LOC, Dr. Orazio Braghenti (Mob. +39 338 8642235). The COVID-19 responsible will be on-call 24/7, from the official day of arrival to the official day of departure.



**“Val di Fassa Audi FIS Ski World Cup”
Passo San Pellegrino (Moena – Italy)
C-19 Prevention Measures and Recommendations Protocol**

EVENT AREA: SPECIFIC MEASURES

TRAINING

The official training course is available every day from 24th to 28th, from 7.30 a.m. at Col Margherita, on the slope “Col Margherita – Lago Cavia”. The slope will be reserved for the teams and closed for the general public. Please remember that you will also be asked to sign an “Assumption of responsibility” file, in order to make use of the Training Course. Only the number of people indicated by the appropriate sign can get on the cable car and on the chairlift. Wear mouth and nose protection during ascent.

TEAM HOSPITALITY

Team Hospitality will be host at Rifugio InAlto that will be reserved for the event.

The entrance is limited to the teams only, OC employees and other groups won't be allowed to enter. Please remember to

- Wear masks when entering and exiting the building and when leaving your table. Ventilation and disinfection will be managed by the staff.
- Sit together with your team colleagues exclusively (no contact with other teams).
- Tables will be reserved and may be used by team members only

ACCESS TO THE CABLE CAR AND TO THE COURSE

Access to the cable car is allowed to authorized and accredited persons only. A preferential access corridor is set up for athletes and team officials.

Access to the track is allowed to a limited number of people, authorized by FIS. The Accreditation team will distribute the course access arm bands to the team representative on occasion of the accreditation, in a sealed envelope, according to the national quota. Arm bands will be checked before the cable car access.



“Val di Fassa Audi FIS Ski World Cup”
Passo San Pellegrino (Moena – Italy)
C-19 Prevention Measures and Recommendations Protocol

STARTING AREA

The entire starting area is an official athlete/team area (red area), fenced off and not accessible to staff and guests.

The LOC staff and the television staff are not allowed to the warm-up area and to the starting tent during the race. Only the HBC can operate in the starting tent and in the warm-up area. Access control is provided.

Starting house + Tunnel:

Access allowed to only 1 athlete + 2 officials per team.

Mask mandatory for officials. Check at the entrance to the departure tunnel.

The staff inside the tent must be limited to:

- Start Referee
- Swiss timing starter
- Hand timing (preferably between the house and the façade, not directly inside)
- Access controller

Staff must wear a certified mouth and nose protection.

Bibs distribution:

Bibs are distributed outdoor, by a single person from the LOC

Team Tent

Open tent, mask mandatory for everyone

**“Val di Fassa Audi FIS Ski World Cup”
Passo San Pellegrino (Moena – Italy)
C-19 Prevention Measures and Recommendations Protocol**

FINISH AREA

Mixed area extension: the total area will be extended according to the current distance measures protocols.

Circulatory flow in the mixed zone

The circulatory flow is respectful of the separation of groups of relatives, staff and media.

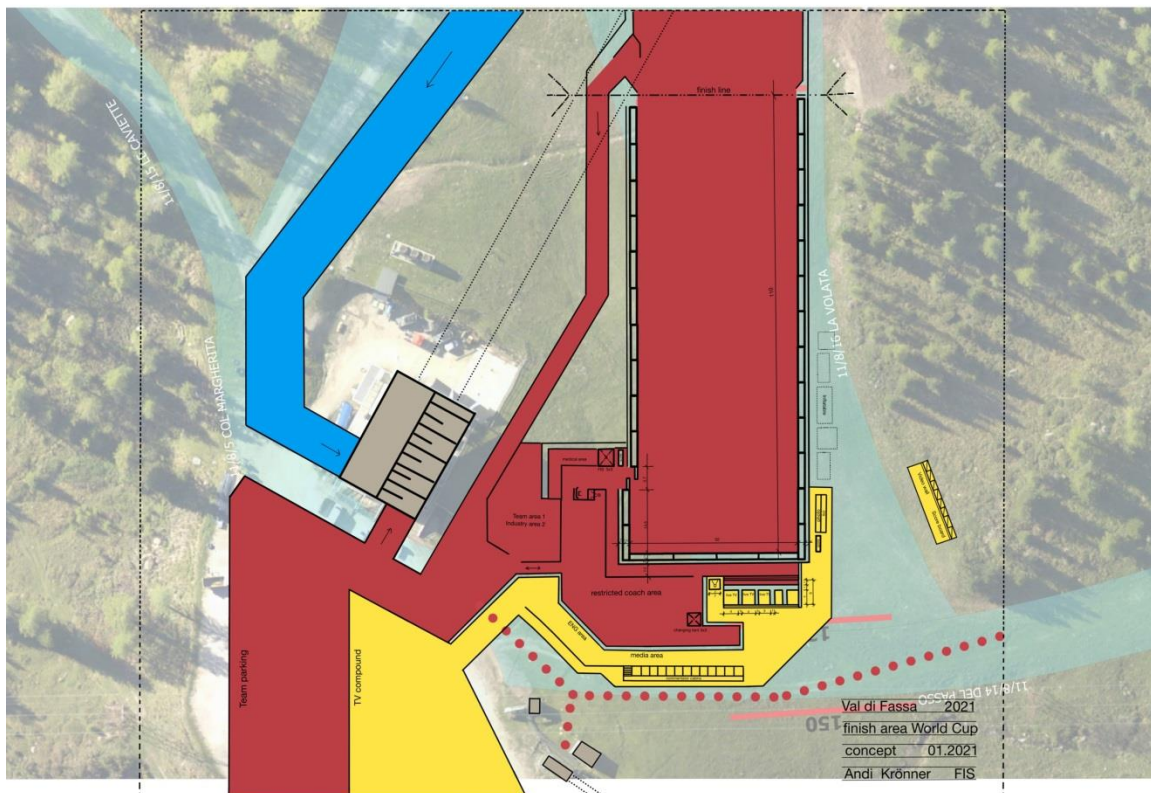
- TV/radio/press must maintain social distance from athletes.
- TV/radio/press must wear masks during interviews.
- The number of media representatives will be severely restricted in agreement with FIS.

Signs

Appropriate signs will be prepared for a better organization of the circulation concept.

Awarding ceremonies

New ceremony protocol without interactions between the different groups will be followed.





**“Val di Fassa Audi FIS Ski World Cup”
Passo San Pellegrino (Moena – Italy)
C-19 Prevention Measures and Recommendations Protocol**

LEAVING VAL DI FASSA

If, in exceptional cases, someone should have to leave Val di Fassa after the arrival and before the departure, this must be notified immediately by writing to the administration office at accommodation@fassa.com

GENERAL RECOMMENDATIONS

We appeal to EVERYONE to take their own responsibility and to comply and implement all measurements and recommendations given!

Guidelines are used to implement or control compliance with the COVID-19 specifications. For your own safety and for the safety of other people, you must follow the instructions of the operational staff.

We reserve the right to exclude you from the event and to take legal action in the event of non-compliance with the COVID-19 regulations.

The defined measurements were determined in accordance with the current regulations (on the day of the issuing of this document, 10.02.2021).

The organizer reserves the right to make any necessary change, which will be announced straight.